



## Executive Summary

For a range of reasons and by way of a number of different vectors noxious and poisonous weeds have been invading the traditional Maori lands at Omaio. These weeds are in many cases highly invasive and indeed poisonous and further present a safety hazard.

The hapu of Rutaia with endorsement of the Wharawhara and Awanui Haparapara No.1 lands assembled together as a not-for profit entity in August to September and developed an action plan to either eradicate or at the very least manage the spread of these weeds such that the risk from the weeds spreading any further is seriously reduced. With the support of the Environment Bay of Plenty's Environmental Enhancement Fund two large and highly sensitive areas were targeted and successfully treated.

The area's have been fully treated with all the identified target noxious, poisonous and invasive weeds having now been treated. Indeed, additional area was treated outside of the target area to the Omaio shop. Through a range of different mediums the awareness of this issue and its risks to our traditional lands, among landowners, the community and indeed the Iwi has risen substantively.

Further, through the use of the sophisticated social networking technology Facebook we now have more than 250 active whanau-fans across the country and increasingly the world as far afield as the US, Europe and of course Australia illustrating that while our whanau have left home for either work or education, they remain intimately interested and hungry to participate in and contribute to the active management of our lands. At the current rate of subscription, it is looking likely that membership to the Facebook site will top more than 1,000 members of whanau, hapu and the Iwi sometime in 2010.

As part of the program, science experts principally botanists from the Rotorua Botanical Society were invited to undertake a detailed flora and fauna inventory to identify and catalogue the botanical, common and indeed Maori names of all plants in the target area. An important outcome of this study was the identification of a number of rare native plants and indeed bird-life on the target lands. From this work management plans have been developed to better assist the landowners actively manage these rare taonga on our lands.

Finally, off the back of the success of the project to date further engagement and dialogue has been established with leading science organisations like the National Institute of Water and Atmospheric Research Institute (NIWA), Scion (Forest Research Limited), Otago University and Landcare (Manaaki Whenua all very interested in lending their own considerable technical capabilities to supporting our objectives.



## Who we are

- Not for profit community/hapu organisation
  - Te Whanau A Rutaia

### **Our Vision:**

- Sustainable management of our community lands, foreshore, assets, marae and community.

### **Our short-term objectives:**

- Eliminate all invasive and noxious weeds and pests from our lands, and prevent further introduction and spread of invasive and noxious weeds on our lands and foreshore.

3

## About us

### **Organizational Overview:**

- We are a not for profit whanau and hapu community organization committed to the principles of Kaitiakitanga (guardianship and sustainability) over our lands and foreshore.
- We pride ourselves on taking a real can-do approach to everything we do and towards showing the necessary leadership to making things happen.

### **Mission:**

- To raise awareness among our whanau, hapu and Iwi around the risks and threats facing our taonga (treasures) and actively and practically take steps to safeguard and protect our treasures for our future generations.
- We will actively seek out, adopt and utilize the best practices, technologies and innovations and, strategic partnerships and alliances available anywhere in the world towards achieving our objectives. And, especially to learn lessons from other indigenous people of the world.

**“Ko te tumanako, ko te whenua me to tatou awa, me nga moana, me nga maunga,  
te waiu mo nga uri i whakatipuranga”**

### **Products:**

- Sustainable and durable economic, social, environmental and cultural development strategies and outcomes.

4



Kaitiakitanga | Caring for our Lands and  
Foreshore  
Restoration Project


## THE PROBLEM



### Why should we worry about weeds?


- There are now more introduced plant species growing wild in New Zealand than native plant species. Introduced plant species continue to naturalise at an alarming rate.
- Only seven species of invasive weeds have been successfully eradicated from New Zealand.
- Invasive weeds are one of the main threats to the survival of 61 threatened native plant species; and impact on another 16 species.
- Weeds threaten the long-term survival of some native animals by changing or destroying their habitat, reducing the availability of food or breeding sites, or influencing the way native and introduced animals behave.
- Weeds are a risk to nearly 600 000 hectares of protected natural areas across the country. Freshwater, wetlands, coastal habitats, lowland forest, shrubland and native grasslands are all particularly vulnerable areas.





Kaitiakitanga | Caring for our Lands and Foreshore  
Restoration Project

# THE SOLUTION





## Hand-felling noxious weeds

Wharawhara Lands



Awanui Haparapara No 1 Lands



# Hand-spraying noxious weeds

Wharawhara Lands



Wharawhara Lands



11

# Awanui Haparapara

The whanau putting up the sign



New sign on-site



12

# Wharawhara

**New sign on-site**



**Dead and dying Wild Rose**



13

# Protecting our Pohutukawa

**Erecting new fencing around Pohutukawa**



**Clearing debris to reduce fire risk**



14

## Clearing and burning

**Cleared hazardous cactus on our beach**



**Burning heaped rubbish on our beach**



15

## Building new fence

**Newly built fence at Little Awanui**



**The whanau building the new fence**



16

## Rare plants and birds

**Hororaka**



**Nesting birds**



17

## Flaura and fauna Inventory

**Rotorua Botanical Society on  
Little Awanui beach**



**On Motunui Island**



18

# Waahi tapu assessment

Whanau and University of Otago  
archeologists

On Motunui Island



19

# Marine and foreshore research

Dr. Darren King of National  
Institution of Water and  
Atmospheric Research (NIWA)

Meeting on the beach at Omaio  
to explore research issues



20



## Raising awareness

- Locally
  - Regular email Newsletters
  - Posters at Omaio shop
  - One on one discussions at marae (Rutaia)
  - Distribution of Published material on weeds and pests
  - Large on-site signage
- Internationally
  - Facebook (social networking technology platform)

# Awanui Haparapara No.1 Lands

## *Kaitiakitanga*

*Caring for our Lands and Foreshore*

These lands are Private and Sacred

- No unauthorised entry (especially onto Motunui Island)
- No unauthorised camping
- Do not dump rubbish
- No unauthorised lighting of fires

Awanui Haparapara No. 1 Trust

23

# Wharawhara Lands Restoration Project

## *Kaitiakitanga*

*Caring for our Lands and Foreshore*

These lands are Private

- No unauthorised camping
- Do not dump rubbish
- No unauthorised lighting of fires

Te Whanau A Rutaia

24



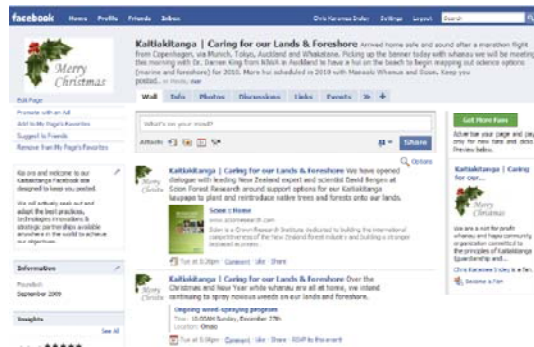
Awanui Haparapara No. 1 and,  
Wharawhara Lands Restoration Project

# PROJECT INNOVATION



## Innovation – *doing it our way*

- Projecting the project nationally and internationally via the world-wide web's social networking platform - *Facebook*. With active dialogue with a range of leading domestic and international science, policy and investor players.
- Use of Rotorua Botanical Society to undertake detailed field inventory of flora and fauna and, to develop management plans to *guide future work*.
- Project has been designed and fully led by the hapu of Te Whanau A Rutaia and Trustees, not Government (*Department of Conservation, Councils etc*).
- Pioneered and demonstrated methods to achieve rapid decision-making with whanau and hapu while preserving tikanga (*doing it our way*).



Check out our Facebook site here for stacks of useful info and ideas about the project:

Webpage: [www.facebook.com/pages/Kaitiakitanga-Caring-for-our-Lands-Foreshore/168923158457](http://www.facebook.com/pages/Kaitiakitanga-Caring-for-our-Lands-Foreshore/168923158457)

## Full flora and fauna inventory completed

**Mr. William Ngamoki on Motunui Island**

**Liz and John Hobbs on Wharawhara lands at Omaio**



27

### **Science scoping meeting with NIWA climate change expert Dr. Darren King**

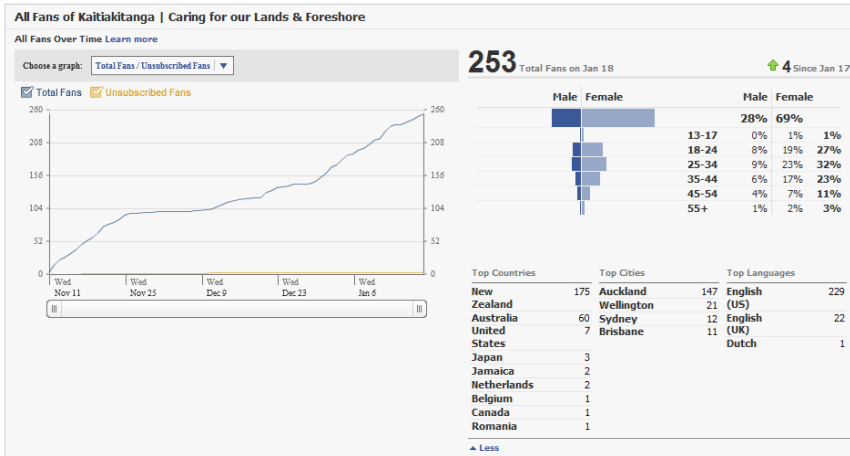
Dialogue is now underway following a meeting with NIWA climate change expert Dr. Darren King on our beach to initiate new research in support of Kaitiakitanga kaupapa. Discussions are currently around :

1. Climate change scenario modelling i.e. What-if sea level rises by 1, 2 etc metres, and/or what-if water temperature rises by 1 or 2 degrees. What are the implications for our coastal communities?
2. Undertaking base-line species mapping in our coastal traditional fisheries to enable science based conservation management strategies and decision making.



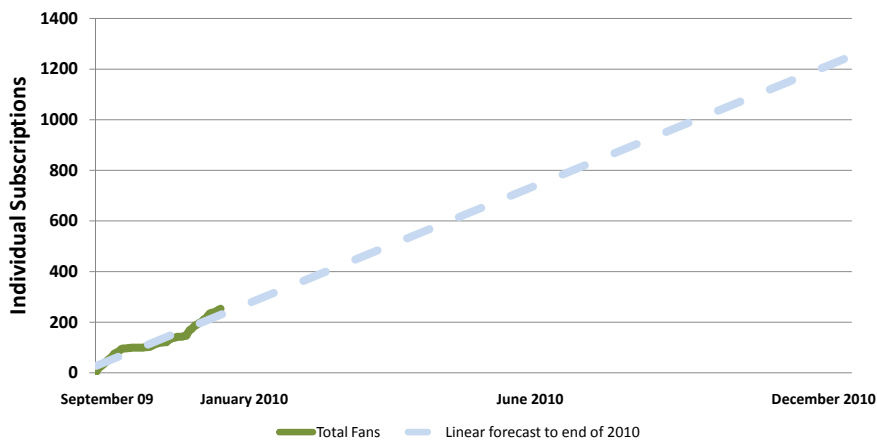
28

## Statistics of growing whanau International support-base of Kaitiakitanga



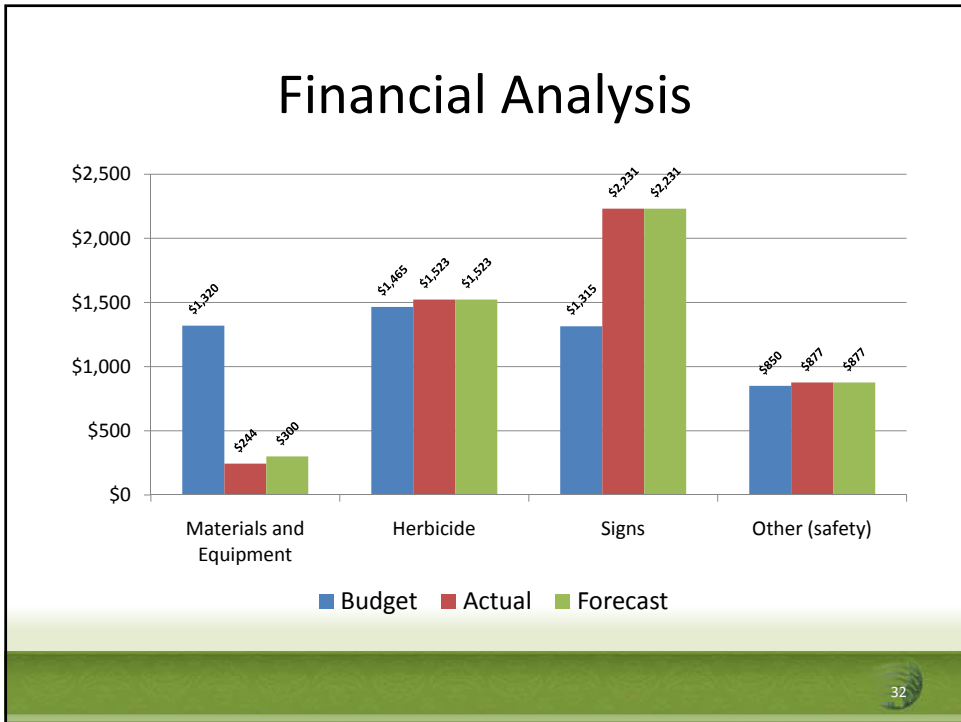
29

## Growth in Subscriptions Forecast to Dec 2010



Note: As at January 21, 2010

30



## Financial metrics and Analysis

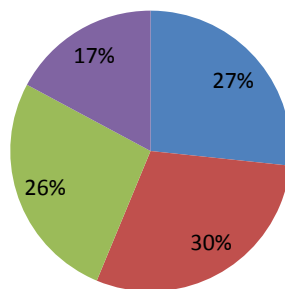
Items	Budget	Actual	Forecast	Var Act	Var Forcst
Materials and Equipment	\$1,320	\$244	\$300	18.5%	22.7%
Herbicide	\$1,465	\$1,523	\$1,523	104.0%	104.0%
Signs	\$1,315	\$2,231	\$2,231	169.7%	169.7%
Other (safety)	\$850	\$877	\$877	103.1%	103.1%
	\$4,950	\$4,875	\$4,931	98.5%	99.6%

<sup>1</sup> Compares actual and forecast expenditure to budget (expressed in percentage terms).

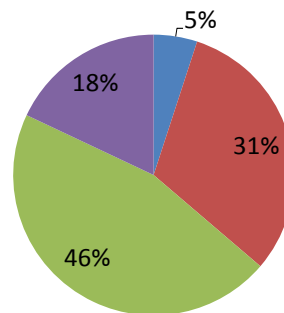
33

## Expenditure Allocation Comparisons

**Budget**



**Actual**



■ Materials and Equipment ■ Herbicide  
■ Signs ■ Other (safety)

■ Materials and Equipment ■ Herbicide  
■ Signs ■ Other (safety)

34

## Suppliers (sorted alphabetically)

No.	Name	Description
1.	AGPRO NZ Limited	Herbicide/s
2.	ASB Bank	Bank fees
3.	Caltex Opotiki	Fuel
4.	Farmlands Opotiki	Safety and other materials
5.	Gisborne Office Products	Stationary
6.	Lowes Hire Opotiki	Materials and equipment
7.	Mitre 10 Opotiki	Materials for signs
8.	New World Opotiki	Food et al
9.	Opotiki Signs	Sign-writing and signs
10.	Tirohanga Store	Fuel

35

## Inventory and Bank balance

### Herbicide inventory (in storage)

Herbicide	Inventory	Value
<i>(Litres)</i>		
Glyphosate 360	0.0	\$0.0
Organosilicone	0.0	\$0.0
Haloxypop 100	1.0	\$320.0
Crop oil	2.0	\$39.0
Tri clop 600	0.0	\$0.0
Red Marker Dye G	0.0	\$0.0
Tricloram	0.0	\$0.0
	<b>3.0</b>	<b>\$359.0</b>
<i>(Grams kgs)</i>		
Meturon	0.0	\$0.0
		<b>\$359.0</b>

### Bank balance

- \$615.15

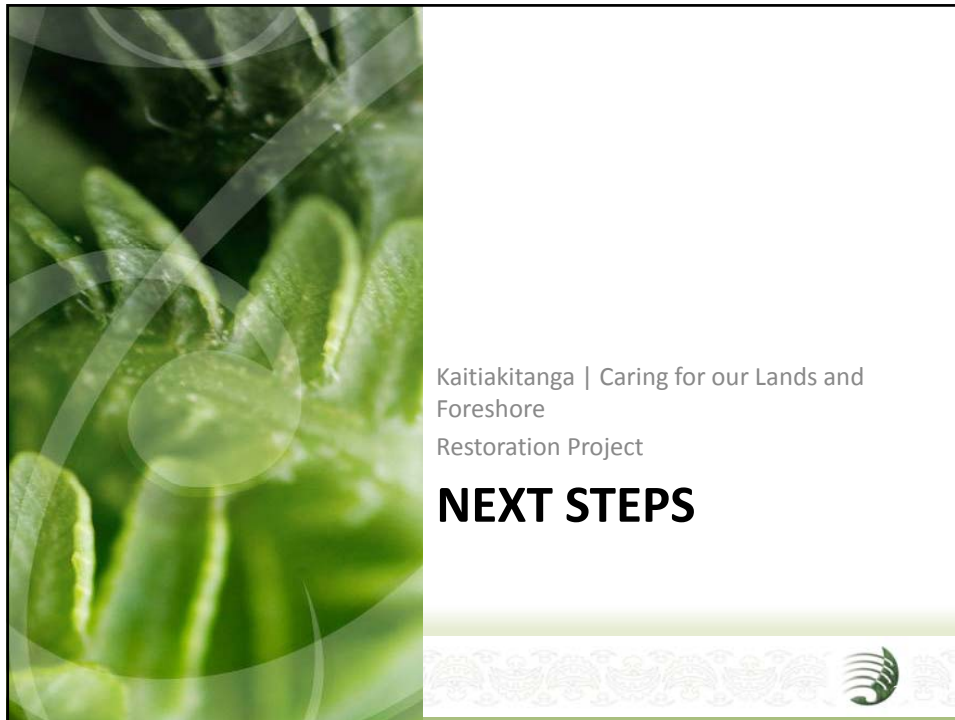
Item	Totals
Inventory	\$359.00
Cash	\$615.15
<b>Total</b>	<b>\$974.15</b>

36



## Bringing it all together

- Not for profit community/hapu project (*no one get's paid*);
- No lost time injuries;
- Started in October with no money (now have a small surplus);
- Project completed in full ahead of schedule (*in full and on-time*) and met all of our objectives;
- Delivered outcomes beyond those agreed. i.e. Treated more area to Omaio shop and, engaged the science community to explore medium to long term research options to underpin long term strategy;
- Flora and Fauna inventory of our lands (*rare native plants*) with 'management plans';
- Eradicated some plants completely from target lands. i.e. Gorse, boxthorn, cactus, wild rose etc.
- No risks (*covenants or liabilities*) incurred on our lands;
- Leadership by ourselves (*not Government*);
- Promoted awareness (*creating demand*) about threats to our lands – with neighbouring hapu and indeed across the Iwi, nationally and internationally;
- Mobilised key leaders and drivers within the community and particularly our students studying at Universities who will in time take up the leadership for the strategy in years to come;
- Established new networks with other supportive agencies (*on our terms*);
- Established a reputation for '*getting things done*' and not just **talking.....**
- Everything is open and transparent.



## Next steps

- Monitor any emergent weed growth and treat these areas
- Develop new application to further grow and enhance the project
  - Signage
  - Further weed treatment
  - Fencing of sensitive areas and waahi tapu



Awanui Haparapara No. 1 and,  
Wharawhara Lands Restoration Project

## ACKNOWLEDGEMENTS



We gratefully acknowledge the following individuals and organisations for their support

1. Environment Bay of Plenty.
  - Mr. Tim Senior for all of his really helpful advice on weed identification, herbicide treatments and use of spray equipment. And, for just being really helpful..
2. All the helpers who gave up their time to get involved.
3. Rotorua Botanical Society.
4. Community endorsement;
  - Rutaia hapu for their endorsement;
  - Community koroua and kuia for their endorsement for the kaupapa.



## Contact Us

Mr. Karamea Insley  
**Project Manager**  
PO Box 2046  
Gisborne  
New Zealand  
E: [ckinsley@37ds.com](mailto:ckinsley@37ds.com)  
P: +64 21 972 782  
Skype: [chris.karamea.insley](https://www.skype.com/user/chris.karamea.insley)  
W: [www.37ds.com](http://www.37ds.com)